

January 31, 2025

Capital Participation in Yamane Holdings

Integral Corporation is pleased to announce that, together with the funds managed by its affiliates (collectively “Integral”), it has contributed capital to Yamane Holdings and its affiliates (collectively “Yamane Group”).

Yamane Group is a steel fabricator that manufactures steel frames for skyscrapers with a management philosophy of "Manage with business ethics". Its core subsidiary YAMANE CORPORATION was founded in Nagato City, Yamaguchi Prefecture in 1971. In addition to its operational excellence established through its vertically integrated business-platform, Yamane Group has gained an outstanding reputation for its proven technical capabilities from design to fabrication, processing, and installation. It is one of the leading companies in Japan that has received an S grade certification from the Minister of Land, Infrastructure, Transport and Tourism. Following Integral’s capital participation, the current president and management team will continue to lead Yamane Group. As part of its environmental initiatives Yamane Group has been operating solar power business with multiple facilities since 2012. Yamane Group is also actively involved in a wide range of activities contributing to communities, such as serving as the main sponsor of the Nagato Blue Angels, a team of women rugby sevens based in Nagato City.

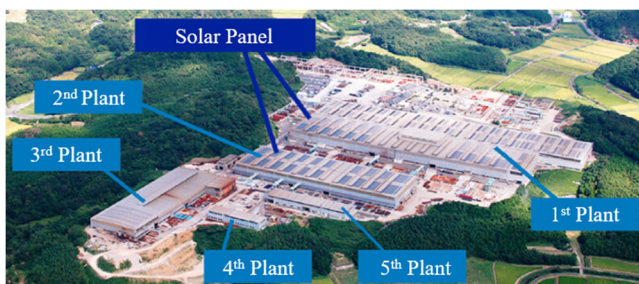
Integral is committed to supporting Yamane Group to realize further growth through "i-Engine" on-site management support and its extensive network of experts.

【Major construction achievements】

- Roppongi Hills, Tokyo Building, Marunouchi Park Building, Meiji Yasuda Seimei Building, Tokyo Midtown, Mitsubishi Shoji Building, Shin-Marunouchi Building, Nihon Seimei Marunouchi Building, Azabudai Hills and Tokyo Skytree

Company Websites : <https://www.yamanetekkou.co.jp/work/>

【The main plant exterior】



【Inside the main plant】



This English translation of the press release was prepared for reference purposes only and is qualified in its entirety by the original Japanese version.

About Integral

Integral Corporation (Representative Director: Reijiro Yamamoto) was founded in September 2007 as an independent Japanese private equity company investing in listed and unlisted companies in Japan. “Integral” stands for “integral calculus – accumulation over time” meaning that the company will strive to establish a relationship of highest trust with the management of invested companies, and will aim to accumulate the highest wisdom over time. Integral makes equity investments from a long-range perspective through its unique “hybrid investment” approach, utilizing both principal and fund money for investment. Subsequent to investment, the company will provide optimal support in terms of management and finance through the “i-Engine” corporate value enhancement team, and will collaborate with the invested company sharing the same objectives and time horizon and seeing eye-to-eye with its management. Integral aspires to be a trusted investment fund, contributing to society through the success of invested companies.

Please Contact Integral for Additional Information:

10F, GranTokyo South Tower 1-9-2, Marunouchi, Chiyoda-ku, Tokyo 100-6610 Japan

Integral Corporation

Tel: +81-3-6212-6100 Fax: +81-3-6212-6099

URL: <https://www.integralkk.com/en/>